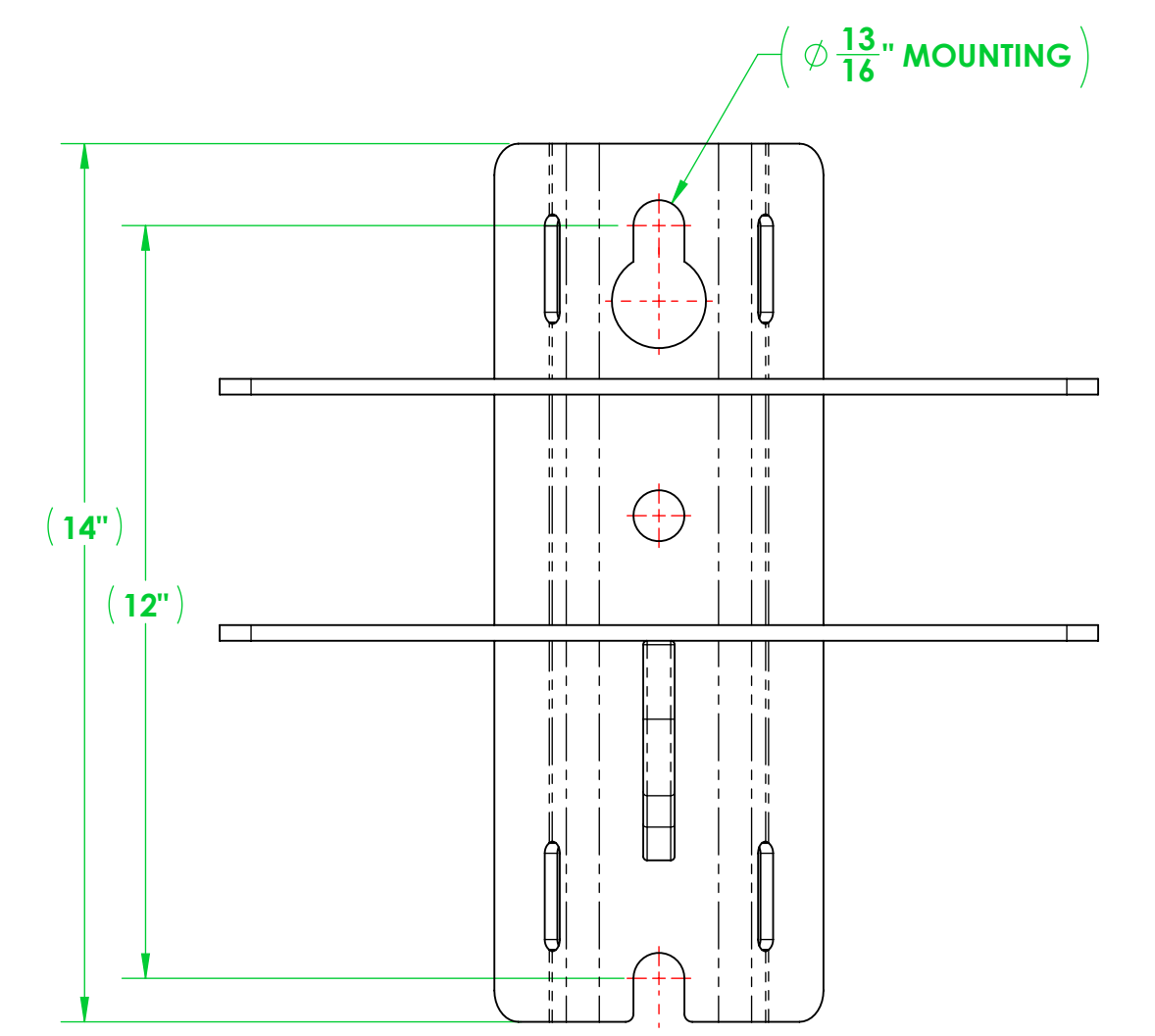
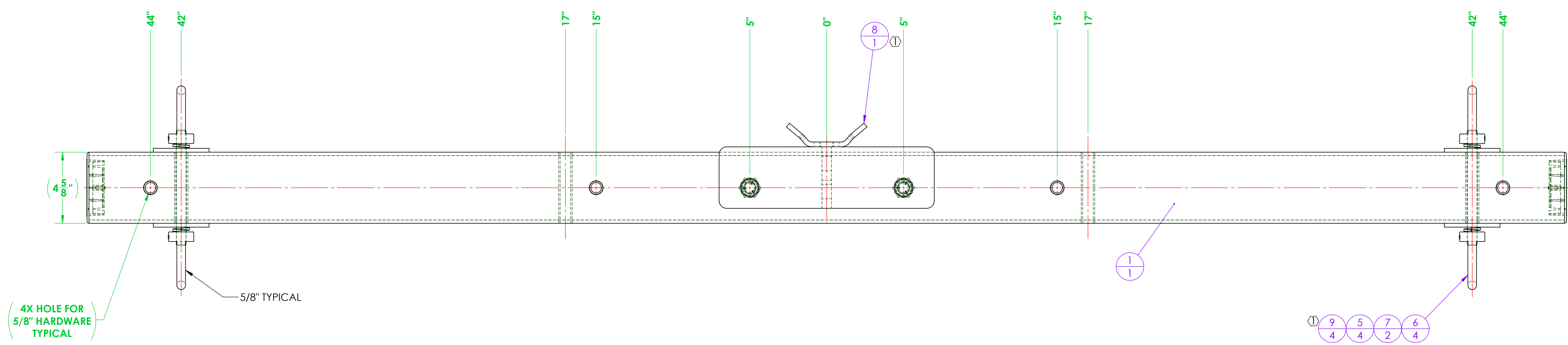
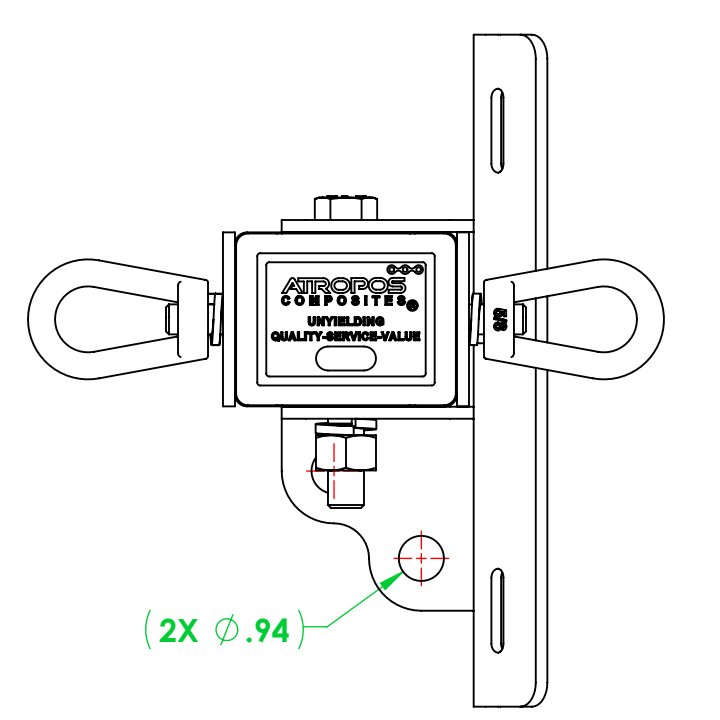
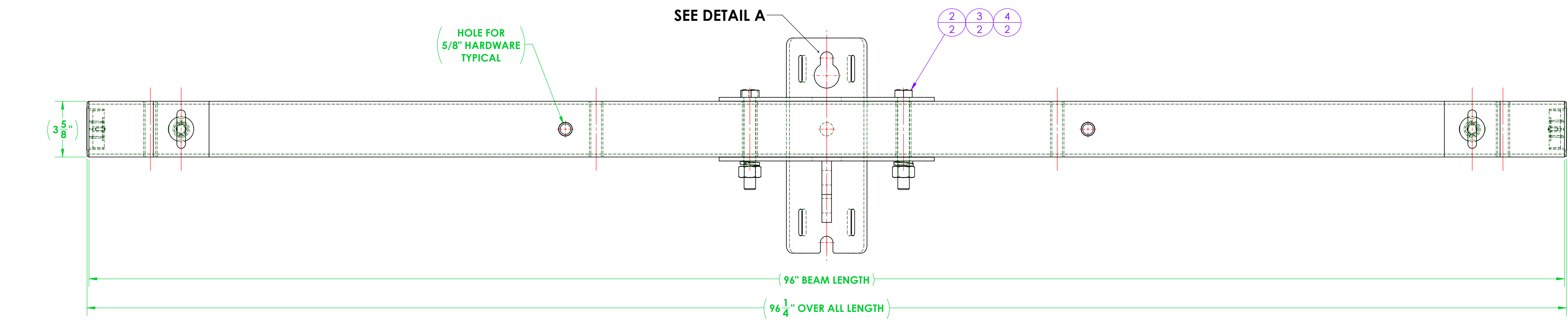


REVISIONS			
REV.	DESCRIPTION	DATE	APPROVED
-	NEW RELEASE	-	-
1	MOUNTING BRACKET WAS FABRICATED NOW PURCHASED. PLATE WASHERS WERE FABRICATED NOW PURCHASED.	4/16/2026	F. BRYANT



DETAIL A



ITEM NO.	PART NUMBER	DESCRIPTION	QTY.
1	3401A096-D312-2910 CA	ASSEMBLY, 3401 DEADEND CROSSARM, 8'	1
2	A616-0020-02	BOLT, HEX, 3/4"-10 X 6.00" LONG, HOT DIPPED GALVANIZED STEEL, 1-1/8" DRIVE	2
3	A616-0042-01	LOCK WASHER, FOR 3/4" SCREW, 0.766" ID, 1.265" OD, 0.188" THICK, HOT-DIPPED GALVANIZED STEEL	2
4	A616-0019-02	EXTREME STRENGTH NUT, HEX, 3/4"-10, 2H, HOT-DIPPED GALVANIZED	2
5	A616-0042-02	LOCK WASHER, FOR 5/8" SCREW, 0.641" ID, 1.073" OD, 0.156" THICK, HOT-DIPPED GALVANIZED STEEL	4
6	A616-0017-02	EYENUT, 5/8"-11, GALVANIZED STEEL	4
7	A711-0044	ALL-THREAD, 5/8"-11 X 7.50" LONG, GALV. STEEL	2
8	A700-0044	CROSSARM MOUNTING BRACKET, DEADEND, 3400 SERIES	1
9	A700-0049	WASHER, SQUARE, 3.625" X 3.625" X 0.25 THICK WITH 0.66 THRU HOLE	4

<b>GENERAL NOTES</b> UNLESS OTHERWISE SPECIFIED DIMENSIONS ARE IN INCHES STANDARD TOLERANCES FRACTIONAL: ±1/32 ANGULAR: ±0.5° BEND: ±2° TWO PLACE DECIMAL: ±0.03 THREE PLACE DECIMAL: ±0.005 INTERFERE GEOMETRIC TOLERANCING PER: ANSI Y14.5 MATERIAL FINISH DO NOT SCALE DRAWING	NAME F. BRYANT DATE 10/15/2025	<b>ATROPOS COMPOSITES</b> 12208 MISSOURI BOTTOM ROAD, HAZELWOOD, MO 63042 PHONE: 314.714.4001 FAX: 314.895.1943 SALES@LABYRINTH-TECH.COM
	CHECKED TJS 10/21/2025	
	ENG APPR. MFG APPR.	
	Q.A.	
TITLE: ASSEMBLY, DEADEND, 3401, (2) WIRE, 8 FT.		SIZE DWG. NO. <b>D3401A096-D312-2910</b>
SCALE: 1:8 WEIGHT: 61.85		REV <b>1</b> SHEET 1 OF 1